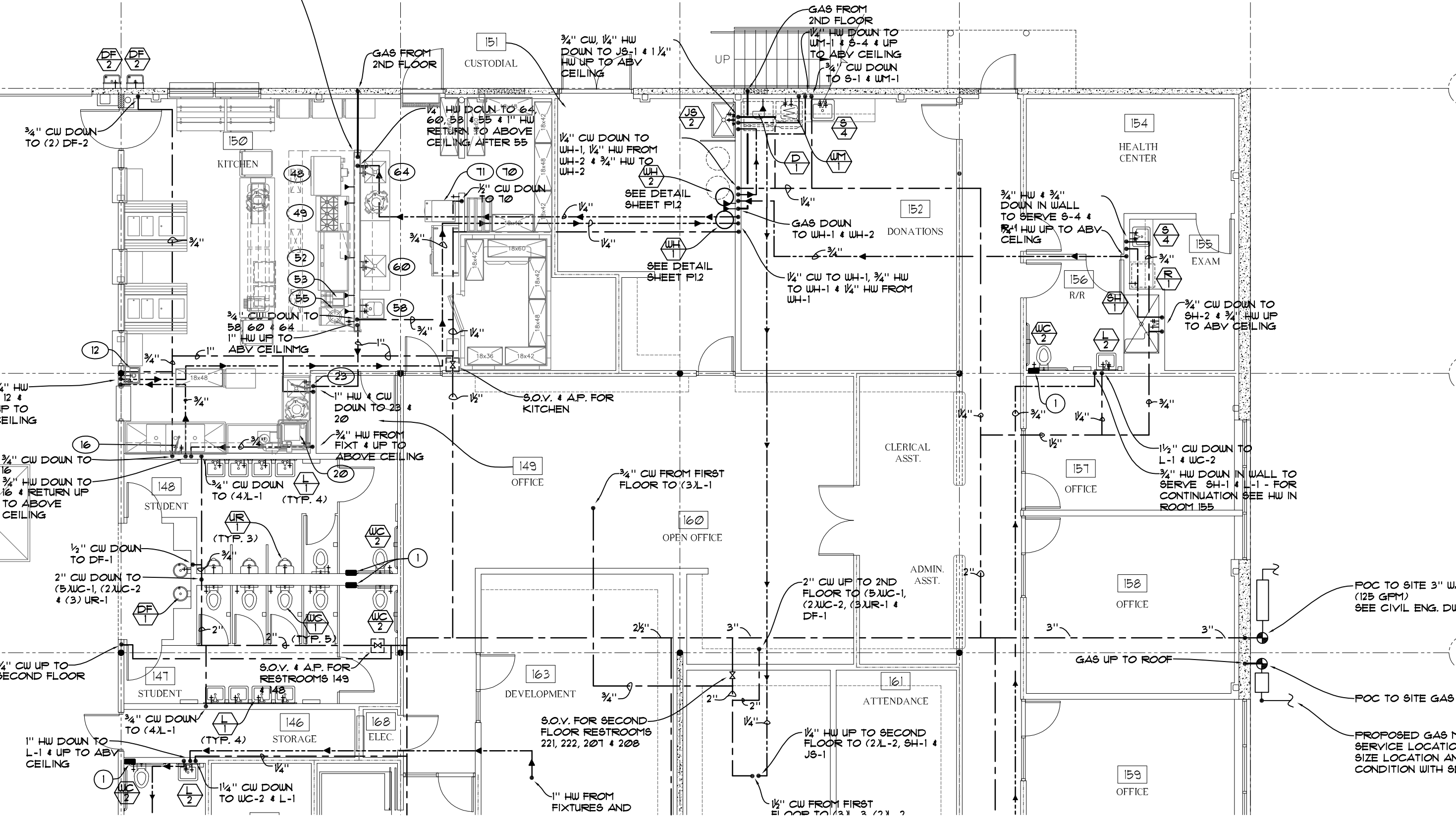


GAS DOWN TO 47 "FIRE PROTECTION SYSTEM" AND CONTINUING TO 48, 49, 52, 53 & 55. SEE KITCHEN EQUIPMENT PLANS FOR SPECIFICATIONS

47



1

2

3

POC TO SITE 3" WATER (125 GPM) SEE CIVIL ENG. DWGS

POC TO SITE GAS

PROPOSED GAS METER AND SERVICE LOCATION - VERIFY SIZE LOCATION AND CONDITION WITH SDGE